

# T-KONE G DRAIN

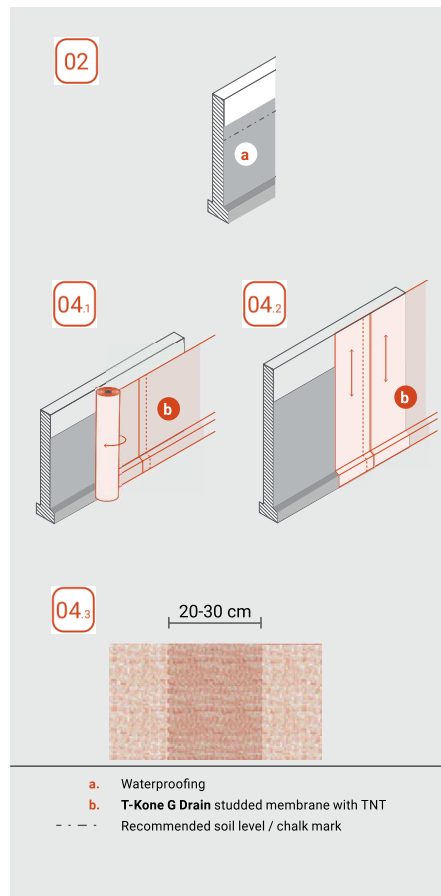
## FOR VERTICAL RETAINING WALL MECHANICAL PROTECTION AND DRAINAGE

The studded membrane laminated with nonwoven fabric serves as a drainage layer, both on horizontal surfaces and on sloping or vertical surfaces, at the same time also serving to mechanically protect the waterproofing (if any).

Usually a 2 man job for speed and ease of installation:

- 01 Brush the footing until it is clean and free of debris.  
Inspect the wall where the product is to be installed and make good any defects that could damage the materials.
- 02 Snap a chalk line around the building where the estimated backfill final grade will be, ensuring that the membrane extends over the edge of the footing to where the gravel or crushed rock drainage system is to be installed.
- 03 Start, preferably towards the center of one wall, by unrolling of T-Kone G Drain, with the flat tab (if used) upwards and aligned with the chalk line.
- 04 Application involves rolling the membrane out and nailing it to the wall, applying the rolls either horizontally (where roll width matches the height of the wall to be protected) or vertically.

If the membrane cannot be applied horizontally due to the height of the wall, the recommended procedure is to cut the roll into suitably tall sections and apply these strips side by side, overlapping them by around 20-30 cm at each side.



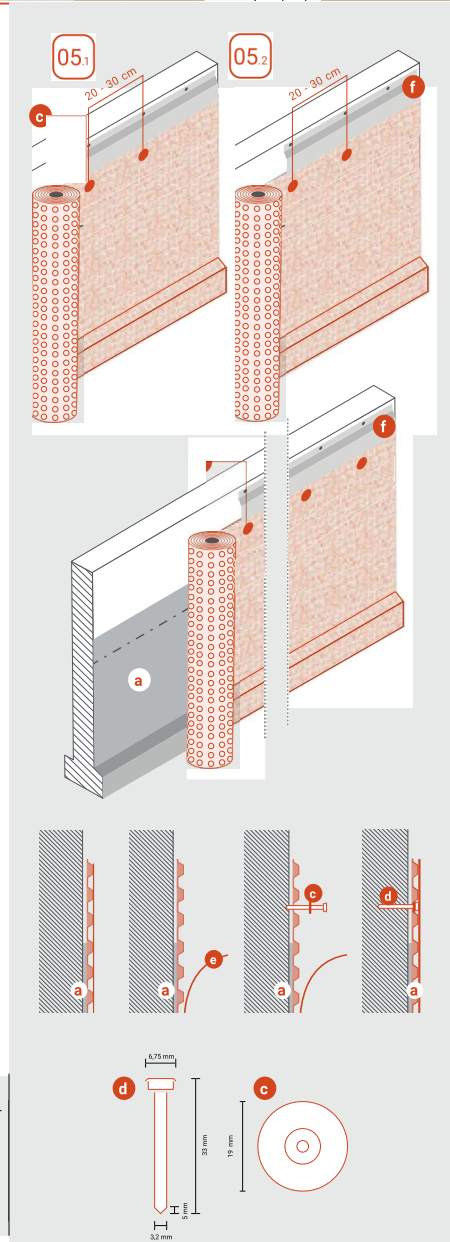
In drainage applications T-Kone G Drain is used with the geotextile facing towards the backfill, i.e. the flat side on the wall.



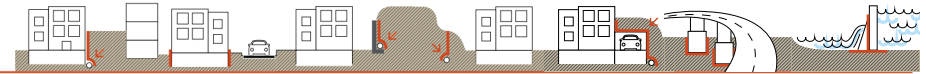
Install washers (suggested) in a staggered pattern as shown in the drawing, 30 cm on centers.

- 05 The next row shall be 10 to 15 cm lower than the previous row of washers, staggered 20 cm from those in the row above.

Use T-Profile for finishing.



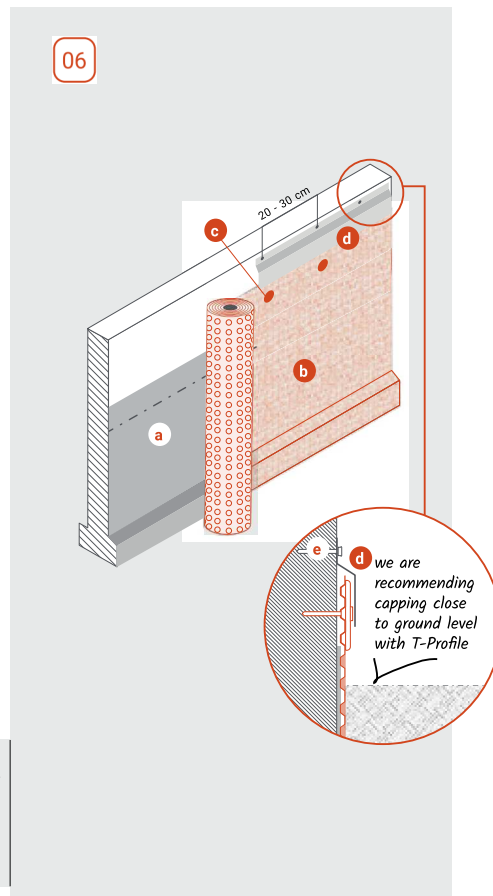
INSTALLATION INSTRUCTIONS



06 Use T-Profile and concrete T-Nails in the flat tab area.

The studded membrane must go high enough to cover the waterproofing completely and must then be protected, in turn, by a strip to stop the backfill entering the gap between the wall and membrane.

T-Nails at the top must be spaced at 20-30 cm intervals both along the top edge of the studded membrane and along the strip.



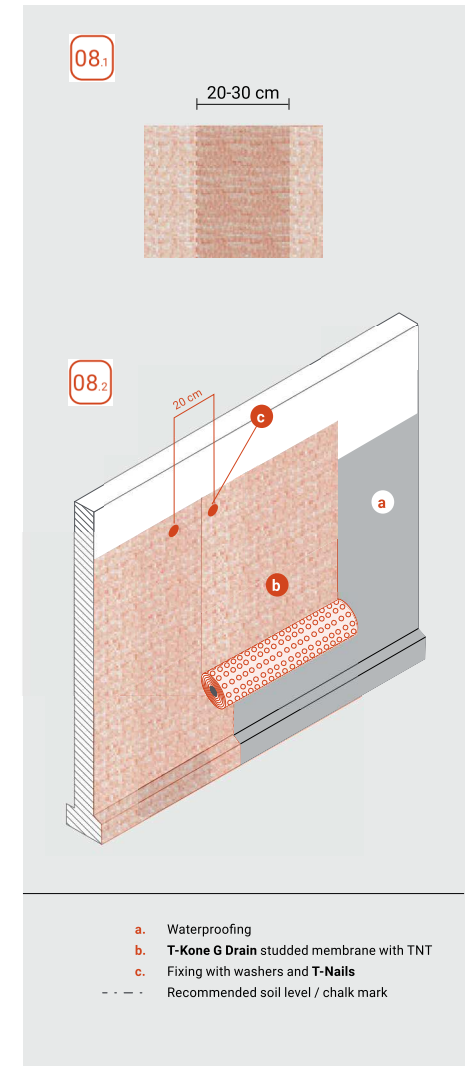
- a. Waterproofing
- b. T-Kone G Drain studded membrane with TNT
- c. Fixing with washers and T-Nails
- d. T-Profile
- e. T-Nails for fixing
- - - Recommended soil level / chalk mark

Vertical Jointing

08 The 2 sheets of T-Kone G Drain should be overlapped by 20 to 30 cm and the dimples should interlock. No caulking is required but washers should be placed along the overlapped area every 20 cm.

Horizontal Jointing

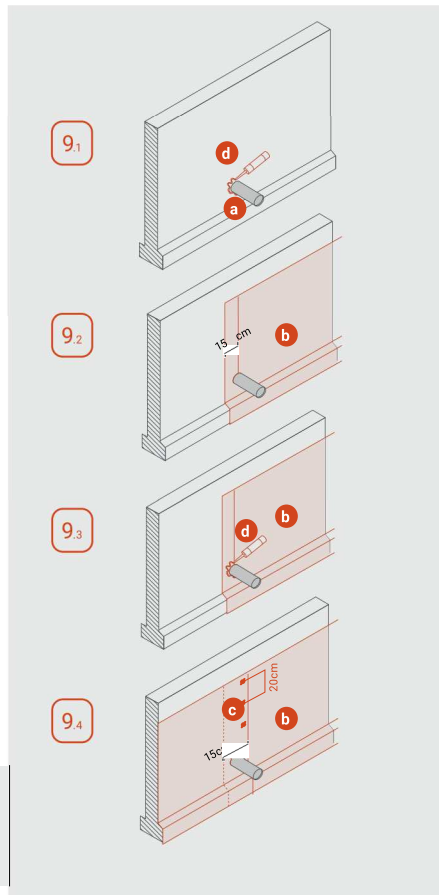
If T-Kone G Drain is not wide enough to cover the full installation height, the first course should be installed from the footing upwards, and subsequently having an overlap of at least 15 cm the second course shall be installed overlapping outside, i.e. the side away from the wall, the first course. In the overlap area install washers every 20 cm.



- a. Waterproofing
- b. T-Kone G Drain studded membrane with TNT
- c. Fixing with washers and T-Nails
- - - Recommended soil level / chalk mark



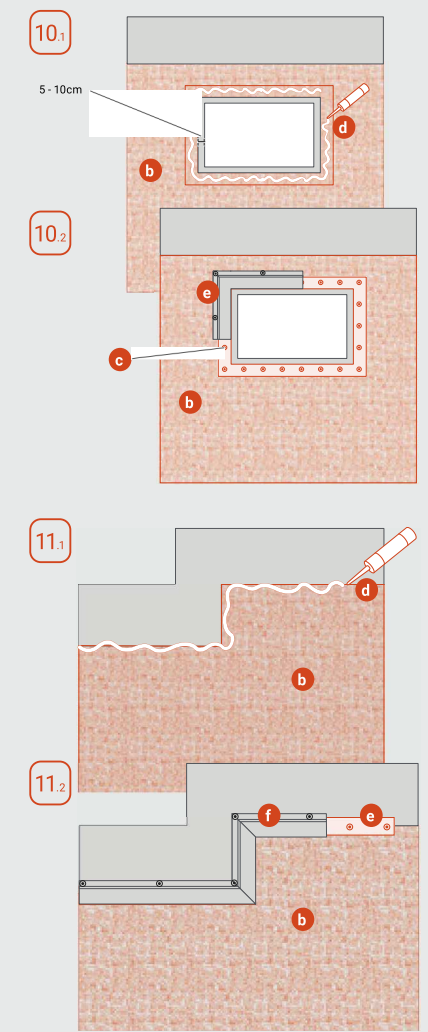
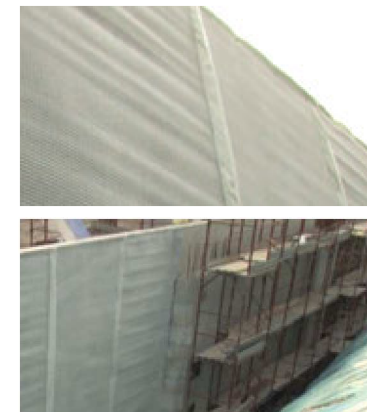
- 09 Service line penetrations such as water, gas, sewage, or similar pipes**
- Place mastic caulking mastic around the pipe or penetration.
- Cut the T-Kone G Drain vertically so that it extends 15 cm past the pipe or penetration, trimming the membrane so that it fits as tightly as possible.
- Place mastic caulking mastic over the membrane so that there is a layer of mastic both above and below the membrane around the pipe or penetration.
- Start the next run of membrane 15 cm before the pipe or penetration so that the total overlap around the pipe or penetration is 30 cm, again trimming around the pipe or penetration for a tight fit.
- Install fasteners every 20 cm along the edge of the overlapped membrane.



- a. Service line penetrations
- b. T-Kone G Drain studded membrane with TNT
- c. Fixing with washers (suggested)
- d. Caulking with mastic

**Basement windows**

- 10** Trim the T-Kone G Drain 5 to 10 cm back from the edge of the window and use T-Profile plus T-Nails to seal around the penetration taking care to caulk the area to properly seal it.
- Change of grade or areas where the flat tab has been trimmed off**
- 11** Use T-Profile plus T-Nails to seal the edge, taking care to caulk the area to properly seal it.



- b. T-Kone G Drain studded membrane with TNT
- c. Fixing with washers (suggested)
- d. Caulking with mastic
- e. Band
- f. T-Profile